

## How can we help you?

### Here is the solution for the metal coil, metal wire and metal sheet industry:

A low cost wrapping solution which eliminates labor intensive tasks, keeps the wrapping material cost to a minimum without compromising the integrity and safety of the load.

#### Why a Wulftec stretch wrapper is the packaging solution for your industry?

- We can tie your metal coil to a wooden pallet and avoid load shifting during transportation.
- Special movable carriage and roping sequence ties the coil to the pallet by placing strong ropes under the wing pallets, combined with a "x" pattern and full film web it provides a nice looking safe and inexpensive package.
- The combination of rope and wrap eliminates expensive containment methods.
- The movable device allows proper positioning of the carriage to bring it as close as possible to the coil, thus ensuring the proper placement of the rope, even with a wide range of coil sizes.



#### Special movable carriage:

The combined "Rope & Wrap" pattern keeps integrity of the package-thus allowing a complete unification of the coil to the pallet for safe transportation.

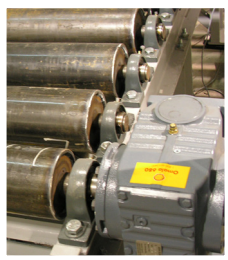
Dual roping cylinders allow a fast speed roping up/down motion to place a rope under each wing of the pallet.



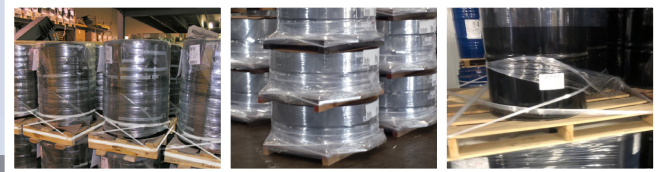
#### Customized stretch wrapper with special carriage:

- Servo-motor unit (part of our patented movable carriage) allowing a close to load movement, thus ensuring a positive pallet wing rope catch over a wide range of loads
- Load size detection laser allows proper carriage extension and automates the wrap pattern selection
- Special software package with multiple wrap/rope pattern selections
- Adjustable tilting clamp to ensure proper film tail management for a large variety of film and load sizes
- Plastic loop ensures a proper wipe action on different load sizes
- Wrap diameter extension
- Rotary arm dual speed improves productivity in full web operation while keeping a reasonable speed in roping mode
- Ring gear sprocket counter, allowing constant and precise rotary arm positioning, which is essential for this kind of application
- Retroflective dual boom mounted autoheight photoeye to ensure proper sensing on round and shiny surfaces

#### Optional super heavy duty conveyor:



- Up to 40,000 pound capacity roller conveyors designed with the knowledge of a well known conveyor leader in this industry
- 5½" roller diameter
- 74" BFR allowing a wide range of coil sizes
- 5 HP drive motor
- 20 FPM conveyor speed



## We have the solution for your industry

#### Our stretch wrappers are built to last in the harshest of environments

- Best warranties in the industry
- 10 year warranty on 25" ring gear bearings
- Lifetime warranty on pre-stretch rollers' blue compound
- Heavy duty structural steel construction (no plastic)

#### Stretch film is one of the most economical and reliable packaging materials

- Offers protection from water ingress, dirt and abrasion
- Ensures integrity of the load
- Highly flexible to wrap a multitude of shapes
- Available in different film gauges, characteristics, lengths and colors
- Exceptional puncture resistance
- Stretch film can be recycled

Productivity and cost effectiveness go a long way with a Wulftec stretch wrapping solution.

Speed up your production line and get to the market faster with a competitive edge wrapping solution.



# WWW.WULFTEC.COM

## WE FEAR NO PACKAGING CHALLENGE